

CUSTOM CONTENT

JANUARY 18, 2021

# LOS ANGELES' TOP DOCTORS



LOS ANGELES IS BRIMMING WITH MANY OF THE NATION'S BEST HEALTH CARE PRACTITIONERS AND CENTERS OF EXCELLENCE. We've selected a sampling of some of the very best and most outstanding physicians to create our collection of the Top Doctors for 2021.

For our Los Angeles' Top Doctors profiles this year, we analyzed each of the many nominations received and selected outstanding medical professionals from almost 20 specialties of focus: *Cardiology, Colon & Rectal, Dermatology, Emergency Medicine, Endocrinology, Gastroenterology, General Surgery, Infectious Disease, Internal Medicine, Neurology, Obstetrics & Gynecology, Oncology, Ophthalmology, Orthopedics, Otolaryngology, Pediatrics, Plastic/Reconstruction, Pulmonology* and *Radiology*. Doctors were selected based on their good standing, reputation, thought leadership and success here in Los Angeles and our arranged here alphabetically by specialty.

LOS ANGELES' TOP DOCTORS

# Letter from the Publisher



This past year, with the continuing COVID-19 crisis and all its accompanying challenges, our doctors have been forced to step up to enormous new challenges. Whether specializing in the treatment of infectious diseases or otherwise, it has been our doctors on the front lines making pivots and adjustments to their routines and their methods of delivering care – all while maintaining their commitment to a gold standard of treatment.

On the preventive side as well, it is the health care providers who serve as our all-hours “trusted advisors” for our bodies and overall physical and mental well-being. It’s hard to think of more important guidance than that received from our doctors.

The Los Angeles region is brimming with many of the best doctors in the country and the world. Indeed, there are so many great doctors here, it makes it tough to select the very best providers to profile in these pages.

We’re proud to present you with our selections – chosen from hundreds of nominations – and congratulate those excellent physicians and care practitioners who made this year’s class of 2021 Top Doctors. By maintaining the physical health of our people – during a pandemic or otherwise – they are making a difference and helping to make our community of businesses thrive.

Congratulations – and thank you – to all the great physicians who made this class and who play such an integral role in our lives and the lives of our families, friends and colleagues – now more than ever.

Best regards,



Josh Schimmels  
Publisher & CEO

## LOS ANGELES BUSINESS JOURNAL

# HEALTH CARE SPOTLIGHT

ALIGN YOUR BUSINESS WITH OUR EXTENSIVE **HEALTH CARE** PORTFOLIO

The **Los Angeles Business Journal** continues to recognize the important role the health care industry has played in providing the best medical care to our affluent readers. LA is home to so many world-class medical treatment and research centers and our readers are fortunate to have access to such exceptional care and choices. We are committed to educating our readers so they can be informed and lead healthier lives.

**LISTS**

- Bioscience Companies
- Health Insurers
- Hospitals

**CUSTOM CONTENT**

- Cancer Awareness, Prevention & Treatment
- Health Care Roundtable
- L.A.’s Top Doctors
- Women of Influence: Health Care

**SIGNATURE ISSUES**

- LA500
- 2022 Book of Lists

**EVENTS**

- Diversity & Inclusion Symposium
- Economic Forecast Panel
- Executive Wellness
- Health Care Panel & Awards
- Nonprofit & Corporate Citizenship Awards
- Women’s Leadership Series & Awards



For more information and to secure space, please contact **Eva Juse at [ejuse@labusinessjournal.com](mailto:ejuse@labusinessjournal.com)**

# CITY OF WON'T BACK DOWN

At City of Hope, our unique expertise in infection prevention and control makes us one of the safest places to be if you have cancer today. As one of the leading cancer research and treatment centers in the country, we have decades of experience treating patients with compromised immune systems. So in these challenging times, you can confidently continue with the care you need.

And we'll continue our mission to create a world without cancer.

**Discover more at [CityofHope.org](https://www.cityofhope.org)**



LOS ANGELES' TOP DOCTORS



**SUNNY BHATIA**  
**CARDIOLOGY**

CEO, Region I and Corporate Chief Medical Officer  
Prime Healthcare

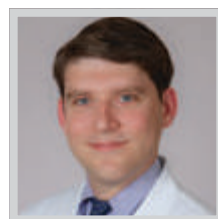
Dr. Sunny Bhatia is an interventional cardiologist who is quadruple board certified in internal medicine, cardiovascular disease, nuclear cardiology and interventional cardiology. As a physician leader, interventional cardiologist, founder of medical groups, and executive leader of one of the largest health systems in the United States, Dr. Bhatia is a champion of healthcare excellence ensuring ongoing clinical quality and performance improvement. Dr. Bhatia establishes and facilitates processes to ensure engagement and alignment of all C-suite leaders and physicians, including setting the strategic direction and priorities for enhancing the quality, safety, and effectiveness of healthcare delivery for 18 Prime hospitals in California and Nevada.



**STEVEN BURSTEIN**  
**CARDIOLOGY**

Director of the Cardiac Catheterization Laboratories  
PIH Health Good Samaritan Hospital

Steven Burstein, MD currently serves as the director of the Cardiac Catheterization Laboratories at PIH Health Good Samaritan Hospital. He received his medical degree from the University of Witwatersrand in Johannesburg, South Africa. He completed his postgraduate training at the Michael Reese Hospital in Chicago. At Massachusetts General Hospital, Dr. Burstein completed his Fellowship in Cardiology and Interventional Cardiology, working with some of the foremost pioneers of the field. Dr. Burstein is also an associate professor of medicine and director of structural heart disease at the Keck School of Medicine of USC.



**EUGENE DEPASQUALE**  
**CARDIOLOGY**

Medical Director, Heart Failure, Heart Transplant & Mechanical Circulatory Support  
Keck Medicine of USC

Dr. Eugene DePasquale is the current chair for the International Society for Heart & Lung Transplantation Care for the Heart Transplant Recipient Guidelines. He has worked on outcomes for advanced heart failure patients as well as expand access and patient selection for heart transplantation and mechanical circulatory support. Dr. DePasquale also specializes in inherited cardiomyopathies, such as hypertrophic cardiomyopathy. Additionally, he has an interest in sports cardiology and serves as a medical consultant for the Women's Tennis Association. His research focus is on patient selection and outcomes in heart failure and heart transplantation; and noninvasive approaches to heart transplant rejection surveillance.



**VIVIAN Y. MO**  
**CARDIOLOGY**

Interim Chief, Division of Cardiovascular Medicine; Chief Medical Officer, USC Care Medical Group  
Keck Medicine of USC

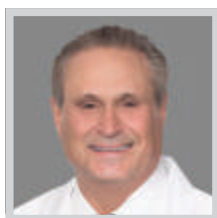
Dr. Vivian Mo is a general cardiologist with a specialty focus in echocardiographic imaging who has been instrumental in building the current valve program at Keck Hospital of USC and helped achieve Keck's #11 national ranking by US News and World Report for Cardiology and Heart Surgery in 2019. She has been at her current practice for 13 years and started out as a junior attending fresh out of fellowship. During her time at Keck, she had the opportunity to build her expertise and practice and expand into new imaging techniques with 3D echo to assist in structural heart disease interventions.



**SUDHAKER NAYAK**  
**CARDIOLOGY**

Cardiologist  
PIH Health

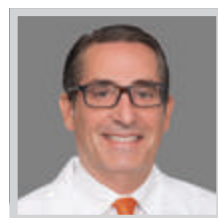
Sudhaker H. Nayak, MD is a board-certified cardiologist at PIH Health. He completed education and training at Osmania University in India, where he was first in his pre-med class and received a National Merit Scholarship. He immigrated to the U.S. and completed a residency in internal medicine at Prince George's Hospital Center in Maryland and a fellowship in cardiology at Wayne State University School of Medicine in Michigan. He completed a fellowship in interventional cardiology and electrophysiology at Kaiser Permanente Hospital in Los Angeles. Dr. Nayak holds a general board certification in internal medicine, and also has sub-specialty certifications in critical care medicine, interventional cardiology and cardiovascular disease.



**MARC SAKWA**  
**CARDIOLOGY**

Chief of Cardiovascular Surgery and Medical Director,  
Adult Cardiovascular Surgery, MemorialCare Heart & Vascular Institute  
MemorialCare Long Beach Medical Center

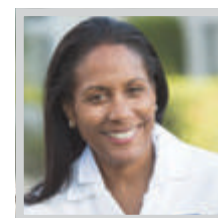
Marc Sakwa, MD is board-certified in cardiothoracic surgery and is nationally recognized as a pioneer in advanced heart care. He completed his undergraduate studies, graduating Magna Cum Laude at Brown University. Subsequently, he earned his medical degree at Columbia University College of Physicians and Surgeons. Dr. Sakwa did his general surgery residency training at Brigham and Women's Hospital. He completed his residency in cardiothoracic surgery at NYU Medical Center. Dr. Sakwa is chief of cardiovascular surgery at the MemorialCare Heart & Vascular Institute and also serves as medical director of adult cardiovascular surgery at the MemorialCare Heart & Vascular Institute at Long Beach Medical Center.



**DAVID SHAVELLE**  
**CARDIOLOGY**

Medical Director,  
Adult Cardiology & Interventional Labs  
MemorialCare Long Beach Medical Center

David Shavelle, MD chose medicine as a career because of early childhood memories of his father, who was one of the first nephrologists in the Long Beach area to establish an outpatient dialysis center. Dr. Shavelle developed a particular interest in cardiology because of the strong basis on physiology and similarities to basic Mechanical Engineering principles, including hemodynamics. Today, he is actively engaged in clinical research and has published approximately 100 peer-reviewed manuscripts. Dr. Shavelle has received multiple teaching awards including the Golden Apple Award from Keck School of Medicine in 2010 and 2019.



**KAROL WATSON**  
**CARDIOLOGY**

Professor of Medicine and Cardiology,  
David Geffen School of Medicine at UCLA  
UCLA Health

Dr. Karol Watson is an attending cardiologist and a professor of medicine/cardiology at the David Geffen School of Medicine at UCLA. She is Director of the UCLA Women's Cardiovascular Health Center, the UCLA-Barbra Streisand Women's Heart Health Program, co-director of the UCLA Program in Preventive Cardiology, and director of the UCLA Fellowship Program in Cardiovascular Diseases. Dr. Watson is a principal investigator for several large NIH research studies. Dr. Watson's more than 100 publications and presentations have addressed many subjects including prevention of heart disease, vascular calcification, hypertension, and cardiovascular disease in African Americans.



# WE TAKE ON THE TOUGHEST CASES

and safely provide care  
that's right for you

Your safety is our top priority. From routine procedures to the most complex cases, our doctors and health care teams deliver the best possible outcomes. See our physicians who made the list of "Top Doctors" in Los Angeles.

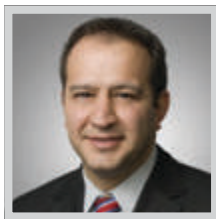
**(800) USC-CARE**  
[KeckMedicine.org/latopdocs](https://www.KeckMedicine.org/latopdocs)



Keck Medicine  
of USC

BEYOND EXCEPTIONAL MEDICINE™

LOS ANGELES' TOP DOCTORS



**ARMEN C. GREGORIAN**  
**COLON & RECTAL**

Physician  
PIH Health

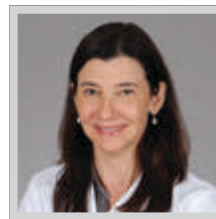
Armen Gregorian, MD is a board-certified physician specializing in general surgery and colon/rectal surgery at PIH Health. Dr. Gregorian completed an internship in general surgery at Harbor-UCLA Medical Center in Torrance, where he also served as a clinical researcher and resident in general surgery. Dr. Gregorian was awarded a prestigious yearlong fellowship in colon and rector surgery at Brown University in Rhode Island. He previously served as an assistant clinical coordinator in the UCLA School of Medicine's Department of Neurosurgery, where he was responsible for setting up the clinic, providing scans and conducting administrative tasks related to procedures, visits and surgeries.



**FOLASADE MAY**  
**COLON & RECTAL, GASTROENTEROLOGY**

Director, Melvin and Bren Simon Quality Improvement Program; Assistant Professor, Vatche and Tamar Manoukian Division of Digestive Diseases; Member, Jonsson Comprehensive Cancer Center and UCLA Kaiser Permanente Center for Health Equality; Researcher, UCLA Center for Cancer Prevention Control Research  
UCLA Health

Dr. Folasade May is director of the May Laboratory, a health services and clinical research team that engages in research and quality improvement related to population health, preventive health, and health disparities at UCLA Health, in Federally Qualified Health Centers, and in Veterans Affairs. Dr. May's research spans several fields from the epidemiology of disease and disease risk factors to implementation science to improve disease prevention in early detection of cancer. She also is director of grants and postgraduate research for the UCLA David Geffen School of Medicine Global Health Program.



**MARIA T. OCHOA**  
**DERMATOLOGY**

Professor of Clinical Dermatology  
Keck Medicine of USC

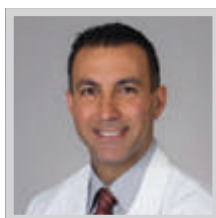
While providing high quality and compassionate care to her patients, Dr. Maria Ochoa's clinical and research interest centers around infectious diseases of the skin, including the diagnosis and treatment of patients with skin manifestations of HIV, tropical dermatology and sexually transmitted diseases. She serves as the Director of the Hansen's clinic at Los Angeles County. She also has a special research interest in the immunologic mechanism of the host response in infectious diseases of the skin. She is also focused on teaching the new generation of dermatologists and contributing to scientific publications.



**STEFANI TAKAHASHI**  
**DERMATOLOGY**

Clinical Professor of Dermatology; Associate Department Chair; Vice Chair of Education – Dept. of Dermatology  
Keck Medicine of USC

Dr. Stefani Takahashi is a clinical professor of dermatology and the associate department chair for the Department of Dermatology at Keck Medicine of USC. Her research focus is on clinical trials for the treatment of psoriasis and atopic dermatitis. She is also a co-founder and co-director of Camp Wonder, a camp for children with severe skin disease. She is passionate about mentorship and education in dermatology for students and residents. She has served as residency program director for 18 years combined between UCLA and USC, providing support and guidance for medical students and residents as they navigate to through their professional journeys.



**ARMAND DORIAN**  
**EMERGENCY MEDICINE**

Chief Medical Officer, USC Verdugo Hills Hospital; Associate Professor of Clinical Emergency Medicine, Keck School of Medicine  
Keck Medicine of USC

Armand H. Dorian, MD, FACEP, MMM joined the USC Verdugo Hills Hospital executive team in July 2018 as the chief medical officer, business development, to help lead the physician medical staff as well as program development at USC-VHH. He is an associate professor of emergency medicine at the Keck School of Medicine, former chair of the Caduceus Society, and serves as both a foundation board member and community board member at USC-VHH. Dr. Dorian brings nearly two decades of medical experience, as an Emergency Board certified physician and valued leader and administrator. Dr. Dorian has dedicated himself to USC-VHH and the community in which it serves.



**KEVIN V. HUA**  
**EMERGENCY MEDICINE**

Emergency Department Operations Director  
Emanate Health

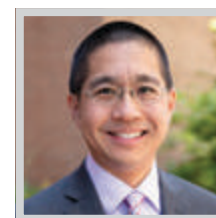
Kevin Hua, DO has been practicing Emergency Medicine for 12 years and has been associated with Vituity since 2011, where he currently services as the emergency department operations director at Emanate Health Inter-Community Hospital. He is an active member of the Emanate Health Medical Center and Foothill Presbyterian Hospital Medical Staffs. Dr. Hua is double board-certified by the American College of Osteopathic Emergency Physicians and the American College of Osteopathic Family Physicians. Under his stewardship, Emanate Health has experienced an improved door-to-identification time from 61 minutes down to 13 minutes. Dr. Hua has been a champion for sepsis surveillance and continues to improve Emanate's delivery of sepsis care.



**BRANDON LEW**  
**EMERGENCY MEDICINE**

Medical Director, Emergency Department  
Huntington Hospital

Dr. Brandon Lew is the medical director of the emergency department at Huntington Hospital, the largest emergency department, and the only level-II trauma center in the San Gabriel Valley. He is president-elect of Huntington Hospital's medical staff and a member of the board of directors. Dr. Lew received his Bachelor of Science in Biological Sciences from USC and his Doctorate of Osteopathic Medicine from Western University of Health Sciences/COMP. He completed his emergency medicine residency at LAC – USC Medical Center. Dr. Lew is also co-director of Exer Urgent Care in Pasadena and La Canada. He is currently on the board of the USC Asian Pacific Alumni Association.



**STEPHEN LIU**  
**EMERGENCY MEDICINE**

Medical Director, Emergency Services  
Adventist Health White Memorial

Dr. Stephen Liu is medical director and attending staff physician, emergency services, at Adventist Health White Memorial (AHWM) in Los Angeles where he was named Physician of the Year in 2016. He received his medical degree from University of North Carolina at Chapel Hill School of Medicine. He performed his residency at Stanford University and has now been practicing for 19 years (seven with AHWM). He is certified and licensed with the American Board of Emergency Medicine.





UCLA Health and the David Geffen School of Medicine at UCLA congratulate Los Angeles Business Journal Top Doctors recipients as well as all of our physicians for being leaders in care delivery.

**Steven Chang,**  
MD, PhD  
Top Doctor

**Judith Currier,**  
MD  
Top Doctor

**Annabelle De St. Maurice,**  
MD, MPH  
Top Doctor

**Eric Esrailian,**  
MD, MPH  
Top Doctor

**Beth Karlan,**  
MD  
Top Doctor

**Deborah Krakow,**  
MD,  
Top Doctor

**Raphael Landovitz,**  
MD  
Top Doctor

**Folasade May,**  
MD, PhD, MPhil  
Top Doctor

**John Moriarty**  
MD,  
Top Doctor

**Antoni Ribas,**  
MD  
Top Doctor

**A. Nick Shamie,**  
MD  
Top Doctor

**Maie St. John,**  
MD, PhD  
Top Doctor

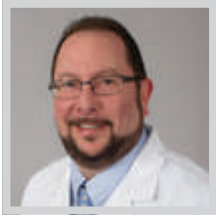
**Robert Suh**  
MD,  
Top Doctor

**Karol Watson,**  
MD, PhD  
Top Doctor

It's that dedication to putting patients first that keeps us first, #1 in Los Angeles and #1 in California according to U.S. News & World Report's annual best hospital rankings.

With four hospitals and over 200 neighborhood locations, everything we do begins with you.

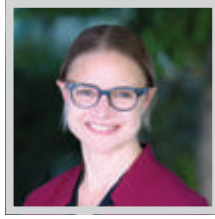
LOS ANGELES' TOP DOCTORS



**DAVID TASHMAN**  
**EMERGENCY MEDICINE**

*Associate Professor of Emergency Medicine, Keck School of Medicine of USC; Medical Director and Chairman, Department of Emergency Medicine at USC Verdugo Hills Hospital*  
**Keck Medicine of USC**

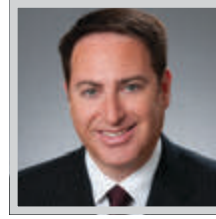
**D**r. David Tashman has over 20 years of practice experience. He graduated Cum Laude from California State University Northridge, and matriculated to The Medical College of Pennsylvania where he graduated with honors. In 2000, he finished dual residencies in Internal Medicine and Emergency Medicine at UCLA. Dr. Tashman has practiced in various clinical settings before settling in at USC Verdugo Hills Hospital Emergency Department, where he is now the medical director and chairman of the Department of Emergency Medicine. His research is focused on care and treatment of the acute stroke patient; Tylenol overdose; and the graphical representation of data.



**JENNIFER RAYMOND**  
**ENDOCRINOLOGY**

*Chief of the Division of Endocrinology, Diabetes and Metabolism; Clinical Diabetes Director; Chair of the Virtual Care Committee; Attending Physician*  
**Children's Hospital Los Angeles**

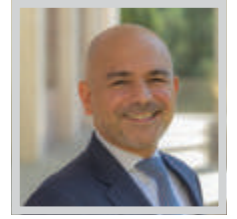
**G**rowing up on a farm in Kansas, Dr. Jennifer Raymond learned how to work hard and care for her entire community. These early lessons solidified her desire for a life of service. Based on her experiences and education, the choice to enter pediatrics was clear, and she further focused this interest on diabetes. Choosing diabetes allowed her to combine her interests in behavioral health, advocacy, working as a team, and long-standing relationships with patients and families. When the opportunity to join Children's Hospital Los Angeles arose four years ago, Dr. Raymond reflected on her goals and concluded CHLA provided the perfect opportunity to combine her goals.



**MARC EDELSTEIN**  
**GASTROENTEROLOGY**

*Chief of Staff*  
**Cedars-Sinai**

**D**r. Marc Edelstein is a highly acclaimed gastroenterologist and is recognized as an expert in the diagnosis and treatment of digestive disorders and the performance of endoscopic procedures. He completed his fellowship in gastroenterology at UCLA Medical Center in 2001. Dr. Edelstein joined the medical staff of Cedars-Sinai in 2003. Where he now serves as chief of staff. Under the duress of COVID-19, Dr. Edelstein created new ways to communicate and amplify the outstanding work of his medical staff and that of Cedars-Sinai's leaders, and as a result, medical center communications will continue to evolve well beyond COVID-19.



**ERIC ESRAILIAN**  
**GASTROENTEROLOGY**

*Chief, UCLA Vatche & Tamar Manoukian Division of Digestive Diseases, David Geffen School of Medicine at UCLA*  
**UCLA Health**

**D**r. Eric Esrailian's primary clinical interests include gastrointestinal endoscopy, inflammatory bowel diseases, gastrointestinal hemorrhage, and functional gastrointestinal diseases such as irritable bowel syndrome. In addition to disease areas within gastroenterology and internal medicine, Dr. Esrailian has a particular interest in the development of biomedical innovations, value in health care, medical education, initiatives towards patient-centered care, and connections between health and human rights. He is closely involved in growth strategy and strategic planning efforts for the UCLA Health System. In 2017, the university designated Dr. Esrailian as a UCLA Optimist, among its notable alumni and faculty dedicated to solving the world's problems.



**FAISAL KHAN**  
**GENERAL SURGERY**

*Physician/Surgeon*  
**Adventist Health White Memorial**

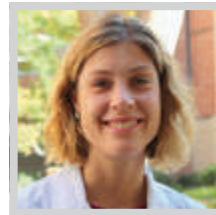
**D**r. Faisal Khan graduated from the Keck School of Medicine of USC in 1980 and now works as a physician/surgeon with emphasis on general and pediatric surgery at Adventist Health White Memorial. Dr. Khan performs surgical procedures to treat conditions affecting the abdomen and related structures, such as hernias or tumors. He trained at Keck School of Medicine at USC and speaks Hindi, Spanish and Urdu.



**JUDITH CURRIER**  
**INFECTIOUS DISEASE**

*Chief of the UCLA Division of Infectious Diseases and Director of the UCLA Clinical AIDS Research and Education (CARE) Center*  
**UCLA Health**

**D**r. Judith Currier has been involved in clinical research studies focused on improving the treatment of HIV infection. Her work has been conducted through the NIAID funded AIDS Clinical Trials and through industry funded studies. Dr. Currier is the principal investigator for the UCLA AIDS Prevention and Treatment Clinical Trials Unit and vice chair of the AIDS Clinical Trials Group. Her areas of research focus include understanding the pathogenesis and management of long term complications of HIV disease, specifically cardiovascular and metabolic complications associated with HIV treatment. She has also led several studies focused on women with HIV from the perspective of treatment and long term outcomes.



**ANNABELLE de ST. MAURICE**  
**INFECTIOUS DISEASE**

*Assistant Professor of Pediatrics, David Geffen School of Medicine at UCLA; Co-Chief Infection Prevention Officer*  
**UCLA Health**

**D**r. Annabelle de St. Maurice has been a cornerstone for UCLA Health's response to the coronavirus pandemic, leading infection control strategy protocols and designing a safe environment for UCLA Health staff and patients as well as UCLA sports teams. In addition to her work as a co-chief infection officer, she leads UCLA's Pediatric Infection Control and Antibiotic Stewardship Programs. She has consulted for the Los Angeles Lakers and has provided guidance for other organizations in the greater Los Angeles community. Her research and clinical interests focus on mitigating the spread and severity of infectious diseases through vaccines and infection control practices.



**ANTONIO E. ESCOBEDO**  
**INFECTIOUS DISEASE**

*Infectious Disease Specialist*  
**PIH Health**

**B**oard certified with the American Board of Internal Medicine with a special interest in infectious diseases, Dr. Antonio Escobedo explains that medicine combines his love of science, "curiosity about why things go wrong" and desire to help people. Specializing in internal medicine enables Dr. Escobedo to develop ongoing relationships and empower his patients to make healthy life choices. Dr. Escobedo earned a bachelor of science degree at UC San Diego and a doctorate from Northwestern University Medical School. He completed an internal medicine residency at Scripps Mercy Hospital in San Diego and was awarded an infectious disease fellowship at the Veterans Affairs Medical Center in Los Angeles.







# Courage

is putting yourself in  
the eye of the storm,  
and not blinking.

Words will never be enough to thank you. We salute all our heroes for your selfless service, compassion and dedication. Sharing our hope for a brighter year, stronger together.

Prime Healthcare congratulates Dr. Kavitha Bhatia, Dr. Sunny Bhatia and Dr. Paryus Patel on receiving the 2021 Top Doctor Award from the Los Angeles Business Journal.



**Kavitha Bhatia, MD, MMM, FAAP**  
Chief Medical Officer, Strategy  
Prime Healthcare  
Chair, Prime Healthcare  
Foundation



**Sunny Bhatia, MD, MMM, FACC, FSCAI**  
Chief Executive Officer, Region I  
Corporate Chief Medical Officer,  
Prime Healthcare  
Chief Medical Officer,  
Sherman Oaks Hospital and  
Encino Hospital Medical Center



**Paryus Patel, MD**  
Corporate Chief Medical Officer,  
Prime Healthcare  
Chief Medical Officer,  
Centinela Hospital Medical Center



- 46** Hospitals Saved
- 14** States
- 300** Quality Awards in 2020 for Patient Safety & Excellence
- 2.5** Million+ Patients Served Annually
- 1.5** Billion in Charity Care in 2019

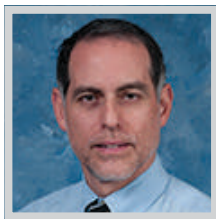


**Prime Healthcare**

*Saving hospitals. Saving jobs. Saving lives.*



## LOS ANGELES' TOP DOCTORS


**ERNIE GUZMAN**  
**INFECTIOUS DISEASE**

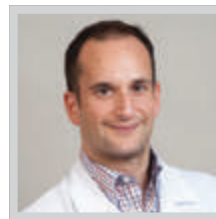
Site Director, Pediatric Education  
 Adventist Health White Memorial

**D**r. Ernie Guzman is site director for pediatric education and a pediatric infectious disease specialist at Adventist Health White Memorial (AHWM) in Los Angeles. He was program director for the Pediatric Residency at AHWM from 2000-2104 when the program closed. He received his medical degree from Albert Einstein College of Medicine and received training in Pediatrics and Pediatric Infectious Disease at Children's Hospital Los Angeles. He has been practicing at AHWM for the past 29 years since completing his training. He is fluent in Spanish and able to easily communicate with patients from this underserved area.


**MAITA KUVHENGUWA**  
**INFECTIOUS DISEASE**

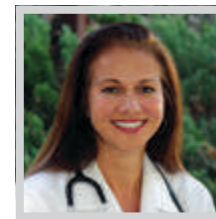
Infectious Disease Specialist  
 MLK Community Healthcare

**D**r. Maita Kuvhenguwa holds a Bachelor's of Science in Biology from the University of California, Irvine, and received her Doctor of Medicine from the University of California Los Angeles David Geffen School of Medicine and the Charles R. Drew University/UCLA Medical Education Program. She is Board Certified in Internal Medicine and in Infectious Diseases, and is a member of the Infectious Diseases Society of America. She is one of the most visible community leaders for educating the public and has appeared on a number of local broadcasts to share her knowledge regarding the coronavirus.


**RAPHAEL LANDOVITZ**  
**INFECTIOUS DISEASE**

Professor of Medicine in the Division of Infectious Diseases  
 UCLA Health

**D**r. Raphael Landovitz is an infectious diseases doctor specializing in HIV/AIDS. Among other things, he led the HIV Prevention Trials Network research that found that a single injection every eight weeks of the drug cabotegravir protects against HIV infection for two months and is more effective for pre-exposure prophylaxis than the widely used daily oral drug Truvada. He is also a principal investigator in the UCLA arm of the AstraZeneca COVID-19 vaccine trial. He heads the Los Angeles County PEP Demonstration Project, collaborates with the City and County of Los Angeles, Friends Community Center, and works in the ACTG, HPTN and ATN clinical trials networks.


**ELIZABETH MASLOW**  
**INFECTIOUS DISEASE**  
**INFECTIOUS DISEASE SPECIALIST**

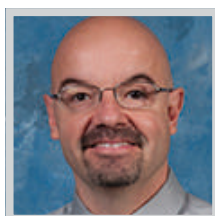
Adventist Health Glendale

**D**r Elizabeth Maslow is an infectious disease physician in Glendale, who practices at Adventist Health Glendale. She received her medical degree from UCLA, performed her residency at Harbor UCLA Medical Center and completed her Infectious Disease fellowship at USC. She specializes in practicing and teaching antimicrobial stewardship. Dr. Maslow serves as a key member of Adventist Health Glendale's COVID-19 Advisory Team.


**NEHA NANDA**  
**INFECTIOUS DISEASE**

Associate Professor of Clinical Medicine,  
 Medical Director of Infectious Disease & Antimicrobial Stewardship  
 Keck Medicine of USC

**D**r. Neha Nanda heads Healthcare Epidemiology/Infection Prevention and Antimicrobial Stewardship at Keck Medicine of USC and its affiliated hospitals and clinics. In this capacity, she leads Keck Medicine's preparation and response for emerging infectious disease. In the last year, through the pandemic, she has led protocol and guideline development as it relates to patient and healthcare safety. Her research interests are geared towards infection prevention strategies and emerging pathogens. Her select publications include the impact of a multidisciplinary approach in reducing preventable harm, treatment strategies and diagnostics for *C. difficile* and biomarkers for appropriate antimicrobial use.


**DR. JUAN BARRIO**  
**INTERNAL MEDICINE**

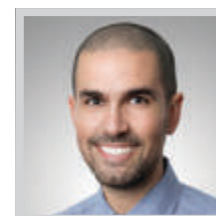
Program Director, Internal Medicine Residency Program  
 Adventist Health White Memorial

**D**r. Juan Barrio is the program director of the Internal Medicine Residency Program at Adventist Health White Memorial (AHWM) in Los Angeles, as well as attending staff physician and physician advisor for AHWM. He received his medical degree from the University of California San Diego School of Medicine. He did his internal medicine residency at Adventist Health White Memorial and has now been practicing for over 20 years at AHWM.


**PINAL DOSHI**  
**INTERNAL MEDICINE**

Internal Medicine Specialist  
 PIH Health

**P**inal Doshi, MD has been practicing medicine since 1990. He attended medical school in India and completed his medical training at Loma Linda University in California and United Hospital Medical Center in New Jersey. He earned a medical doctorate and a master's degree in business administration from University of California, Irvine. In addition to English, Dr. Doshi speaks Gujarati and Hindi. He is board certified in internal medicine. Dr. Doshi believes that continued advances in technology enable today's physicians to offer leading-edge treatments in an atmosphere that is both caring and efficient. His professional mission is to provide the best possible care to his patients.


**MARK FARAG**  
**NEUROLOGY**

Vascular Neurologist  
 PIH Health

**M**ark Farag, MD is a board-certified vascular neurologist at PIH Health with advanced training from the University of California, Irvine. Dr. Farag specializes in neurological conditions affecting the elderly population, including ischemic stroke, dementia and headache. Dr. Farag currently serves as stroke medical director for PIH Health Downey Hospital, which is designated as a primary stroke center. Dr. Farag earned a bachelor's degree at UCLA and a medical doctorate at Temple University School of Medicine in Philadelphia. Dr. Farag has published articles and conducted research in the areas of stroke and intracerebral hemorrhage. He is featured as a speaker at PIH Health's annual stroke conference.



# PIH Health Congratulates Our Top Doctors

**Steven Burstein MD** – Cardiology

**Pinal Doshi MD** – Internal Medicine

**Antonio Escobedo MD** – Infectious Disease

**Mark Farag MD** – Neurology

**Kyle Greene MD** – Oncology

**Armen Gregorian MD** – Colon & Rectal

**Allison Hill MD** – Obstetrics & Gynecology

**Andrew Hsiao MD** – Orthopedic

**Andrew Luu MD** – Orthopedic

**Marlon Maducdoc MD** – Otolaryngology

**Sudhaker Nayak MD** – Cardiology

**David Reinstadler MD** – Otolaryngology

**Millicent Rovelo MD** – Plastic/Reconstructive

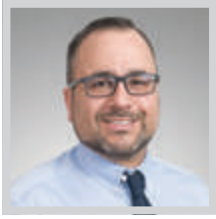
**Ron Shatzmiller MD** – Neurology

**Roy Silver MD** – Obstetrics & Gynecology

**Rodina Vatanparast MD** – Oncology



LOS ANGELES' TOP DOCTORS



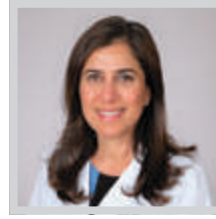
**RON SHATZMILLER**  
**NEUROLOGY**  
 Neurologist  
 PIH Health

**R**on Shatzmiller, MD is a board-certified neurologist at PIH Health. He earned a bachelor's degree in science and a master's degree in neurology from McGill University in Montreal. He completed a medical doctorate at Tulane University School of Medicine. He served as chief neurology resident and clinical neurophysiology fellow at LAC+USC Medical Center. In 2009, Dr. Shatzmiller received the USC Department of Neurology Victor M. Victoroff Award for Compassionate Care in Neurology. He has also served as clinical assistant professor of neurology at USC's Keck School of Medicine since 2011.



**LAILA AL-MARAYATI**  
**OBSTETRICS & GYNECOLOGY**  
 Chief, Division of Obstetrics, Gynecology, and  
 Gynecologic Sub-Specialties  
 Keck Medicine of USC

**D**r. Laila Al-Marayati has maintained a commitment to providing comprehensive obstetric and gynecologic care to underserved and marginalized women in Los Angeles throughout her career. She developed and oversaw a large, collaborative practice between physicians and certified nurse midwives at a large, urban hospital in downtown Los Angeles for over 15 years and has consistently focused on multi-disciplinary safety measures to improve outcomes for high-risk pregnant women. As a leader at Keck and the Keck School of Medicine, one of her goals is to make women's reproductive health at Keck and KSOM a priority for women of all socioeconomic backgrounds.



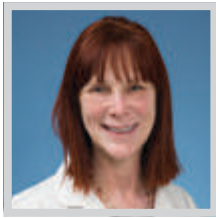
**TANAZ FERZANDI**  
**OBSTETRICS & GYNECOLOGY**  
 Director, Division of Urogynecology and Pelvic  
 Reconstructive Surgery  
 Keck Medicine of USC

**D**r. Tanaz Ferzandi, MD, MBA, MA lends energy and business expertise at the board level of her specialty. She is continuously working to promote clinical care at all levels so that the younger generation of physicians can have a strong woman in the field as a role model. She is also a leader in the area of innovative product development. As a woman surgeon who routinely has to weave through hurdles, she continues to pave the way for the latter generations to follow. Keeping clinically active, surgically innovative and teaching has been instrumental in gaining a "seat at the table" for changes that are necessary in medicine.



**ALLISON HILL**  
**OBSTETRICS & GYNECOLOGY**  
 OB/GYN Specialist  
 PIH Health

**D**r. Allison Hill is a Los Angeles OBGYN doctor who received her MD from Loyola University in Chicago in 1995. She completed her residency in OB/GYN at Los Angeles County – USC School of Medicine. She has been in private practice in Los Angeles for 15 years. While knowledgeable and experienced in all areas of OB/GYN, Dr. Hill has a special interest in cervical cancer screenings, HPV, contraception, preeclampsia and infertility. She has recently retired from delivering babies in order to focus full time on her gynecology practice in Los Angeles, including preconception health, first trimester pregnancies and genetic testing, gynecologic surgery, infertility, and menopause.



**DEBORAH KRAKOW**  
**OBSTETRICS & GYNECOLOGY**  
 Professor and Chair, Department of Obstetrics and  
 Gynecology; Professor, Human Genetics at the David  
 Geffen School of Medicine  
 UCLA Health

**D**r. Deborah Krakow's research interests include defining prenatal ultrasound parameters in the osteochondrodysplasias; prenatal diagnosis of congenital anomalies; pregnancy outcomes in women with genetic syndromes; COVID-19 & pregnancy; and defining the molecular basis of musculoskeletal disorders. Dr. Krakow has spent the last several years researching the genes that cause the development of skeletal dysplasias prior to birth. She is a member of the International Skeletal Dysplasias Registry, which has the largest archive of prenatal cases in the world. Her current research, funded by another NIH-sponsored grant, involves the molecular genetics of Facio-Audio-Symphalangism, where she is attempting to locate the gene for this web-fingered, web-toed condition.



**ROY SILVER**  
**OBSTETRICS & GYNECOLOGY**  
 OB/GYN Specialist  
 PIH Health

**R**oy Silver, MD is a board-certified obstetrician and gynecologist at PIH Health. He holds a bachelor's degree in psychology from Brandeis University in Massachusetts and a medical doctorate from St. George's University School of Medicine in Grenada, West Indies. He completed residencies in OB/Gyn at New York University School of Medicine's Downtown Hospital and at the University of Nevada School of Medicine - University Medical Center, where he served as chief resident. He also completed an externship with the University of Miami's School of Medicine at Jackson Memorial Hospital. Dr. Silver received the prestigious Felix Rutledge Fellowship in Gynecologic Oncology at the MD Anderson Cancer Center in Houston.



**LAURENCE SPENCER-SMITH**  
**OBSTETRICS & GYNECOLOGY**  
 OB/GYN Specialist  
 Adventist Health White Memorial

**D**r. Laurence Spencer-Smith is a physician specializing in obstetrics and gynecology at Adventist Health White Memorial, where he has practiced for 38 years. Dr. Spencer-Smith went to medical school at Loma Linda University School of Medicine and did his internship and residency at Adventist Health White Memorial. His area of special interest is gynecologic oncology and surgery. He received the CREOG National Faculty Award in 2007, and is past president of ACOG District 9, Section 5.



**AVO ARTINYAN**  
**ONCOLOGY**  
 Oncology Specialist  
 Adventist Health Glendale

**D**r. Avo Artinyan is a board-certified general surgeon, a fellowship-trained surgical oncologist, and a colorectal surgeon. He received his medical degree from UC San Diego School of Medicine in 2000 and performed his general surgical and subspecialty training at USC and City of Hope. He was formerly associate professor of surgery and chief of colon and rectal surgery at the Michael E. DeBakey Department of Surgery at Baylor College of Medicine. He is a nationally recognized academic surgeon specializing in the treatment of complex colon and rectal cancers, gastric cancer, and other solid malignancies.



# Congratulations to our very own for being honored as LA's Top Doctors!



**Albert Antonio, M.D.,**  
neonatology



**Christopher Babbitt, M.D.,**  
pediatric intensive care



**Torin Cunningham, M.D.,**  
pediatric orthopedic surgery



**Saar Danon, M.D.,**  
pediatric cardiology



**Glenn Levine, M.D.,**  
pediatric intensive care



**Inderpal Randhawa, M.D.,**  
pediatric pulmonology, allergy  
& immunology



**Antoine Soliman, M.D.,**  
neonatology

We join our community in recognizing your excellence in providing specialized care to expectant mothers and children across our region.



**MemorialCare**<sup>™</sup>  
Miller Children's & Women's  
Hospital Long Beach

# Congratulations to our heroes for being honored as LA's Top Doctors!



**Amandeep Bhalla, M.D.,**  
spine surgery



**Sherief Gamie, M.D.,**  
nuclear medicine



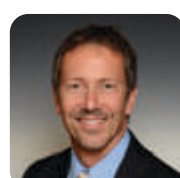
**Marc Sakwa, M.D.,**  
cardiac surgery



**David Shavelle, M.D.,**  
cardiology



**Andrew Wassef, M.D.,**  
orthopedic surgery



**Ronald Wolf, M.D.,**  
surgical oncology

We're proud of your commitment to providing safe, high-quality care to our community not only during this pandemic, but always.

**MemorialCare**<sup>™</sup>  
Long Beach Medical Center

## LOS ANGELES' TOP DOCTORS


**LORETTA ERHUNMWUNSEE**  
**ONCOLOGY**

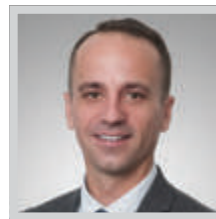
Thoracic Surgeon  
City of Hope

**D**r. Loretta Erhunmwunsee is one of a few female African-American thoracic surgeons in the country. She sees patients with lung, esophageal and mediastinal tumors. Dr. Erhunmwunsee is on a mission to eliminate health inequities among minority and under-resourced populations. Her research focuses on eliminating health inequity in thoracic oncology patients. While lung cancer rates are declining in the United States, disparities still exist along racial and socioeconomic lines, especially for African-Americans. Dr. Erhunmwunsee is part of a City of Hope team that routinely engages the community in various initiatives in an effort to stamp out disparities.


**ADAM GARSA**  
**ONCOLOGY**

Assistant Professor, Department of Radiation Oncology  
Keck Medicine of USC

**D**r. Adam Garsa's research on head and neck cancers has evaluated the efficacy and toxicity of radiation therapy. The systematic review for brain metastases, for which he is principal investigator, is sponsored by the Agency for Healthcare Research and Quality and will be used by the American Society for Radiation Oncology to develop guidelines for the treatment of brain metastases. Dr. Garsa has also been an invited lecturer at regional and national meetings and serves as a mentor to medical students and resident physicians. He is the author of 28 peer-reviewed journal articles, 30 abstracts and publications, and nine book chapters.


**KYLE GREENE**  
**ONCOLOGY**

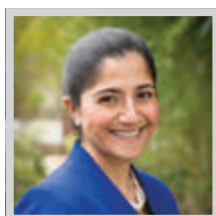
Hematologist and Oncologist  
PIH Health

**D**r. Kyle Greene is a certified hematologist and oncologist. He completed his undergraduate degree at the University of Utah in Salt Lake City and earned his medical degree from Albany Medical College in New York. Dr. Greene completed his internship and residency in internal medicine at Kaiser Permanente Los Angeles Medical Center. He chose the hematology/oncology specialty because he considers it a privilege to take care of individuals and their families with cancer. He finds it rewarding to translate the most modern advances in cancer care to his patients and see them make positive progress and outcomes. He believes physical activity, nutrition and wellbeing are vital to cancer care.


**BETH KARLAN**  
**ONCOLOGY**

Professor of Obstetrics and Gynecology; Vice Chair of Women's Health Research Director; Director of Cancer Population Genetics at the UCLA Jonsson Comprehensive Cancer Center  
UCLA Health

**D**r. Beth Y. Karlan is an internationally recognized expert in ovarian cancer and other heritable cancers with a 30-year career as a physician and scientist. A board-certified gynecologic oncologist and physician-scientist, Dr. Karlan's research and clinical practice focus primarily on ovarian cancer and investigating pressing clinical and translational questions related to the disease. Her research seeks to understand the genetic and phenotypic determinants of ovarian cancer, hereditary predisposition to cancer, and molecular biomarkers for early detection, treatment and prognostication of ovarian cancer. Dr. Karlan publishes extensively, and is editor-in-chief of her specialty's two pre-eminent journals.


**LALEH MELSTROM**  
**ONCOLOGY**

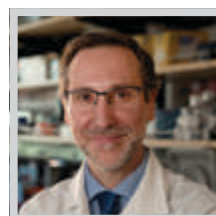
Assistant Professor in the Department of Immuno-Oncology  
City of Hope

**A**talented surgeon and award-winning instructor and researcher, Laleh G. Melstrom, MD, joined City of Hope in March 2015. She was attracted by the opportunity to help develop breakthrough cures and treatments via leading-edge research and clinical trials. Dr. Melstrom is certified in robotic surgery and specializes in the treatment of primary or metastatic cancer to the liver, pancreatic cancer and melanoma. She has published over 100 articles and is one of a few providers in Los Angeles who provide cutting edge surgical and regional therapies for metastatic colorectal cancers to the liver. Dr. Melstrom's clinical expertise is in melanoma and sarcoma, liver cancer, pancreatic cancer and robotic surgery.


**ANN MOHRBACHER**  
**ONCOLOGY**

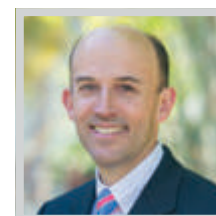
Associate Professor of Medicine  
Keck Medicine of USC

**D**r. Ann Mohrbacher has been an associate professor focused on clinical research and treatment of blood cancers at USC for more than 25 years. She has participated in clinical trials of new immunotherapies for lymphoma, leukemia and myeloma. She has collaborated with researchers in early development of new vaccines and antibody constructs and have developed protocols for cellular therapies. One of the earliest trials she worked on led to the first successful and longest standing monoclonal antibody therapy in lymphoma today. She takes particular satisfaction from her long career in developing new treatments in blood cancers and advocating for patient education and equitable access to treatment trials.


**ANTONI RIBAS**  
**ONCOLOGY**

Professor of Medicine at the David Geffen School of Medicine at UCLA; Director of the Tumor Immunology Program at the UCLA Jonsson Comprehensive Cancer Center; Director of the Parker Institute for Cancer Immunotherapy Center at UCLA  
UCLA Health

**D**r. Antoni Ribas, a world-renowned physician-scientist and pioneer in cancer immunology, has devoted his career to developing and refining new therapies for malignant melanoma. His research focuses on how the immune system can be effectively used to fight cancer in order to develop more effective and less toxic therapies for people with melanoma. He has been recognized by numerous organizations, including the National Academy of Medicine, for defining the mechanistic basis of response and acquired resistance to immune checkpoint blockade cancer immunotherapies, and leading multicenter clinical trials that have provided transformative treatments for patients with advanced melanoma, which was once thought untreatable.


**STEPHEN SENTOVICH**  
**ONCOLOGY**

Physician Lead of Clinical Operations  
City of Hope

**S**tephen M. Sentovich, MD, MBA, joined City of Hope in 2014 and served as the chief of the Section of Colon and Rectal Surgery. He has been named multiple times as one of "America's Top Doctors" both at City of Hope and in Boston, where he was the chief of Colon and Rectal Surgery at Boston Medical Center for 15 years. Known for providing the highest quality care for his patients, Dr. Sentovich is a recognized authority on colon and rectal cancer. He has published dozens of articles and has served as associate editor for the medical journal, Diseases of the Colon & Rectum.



LOS ANGELES' TOP DOCTORS



**RODINA VATANPARAST**  
**ONCOLOGY**

Hematologist and Oncologist  
PIH Health

**R**odina Vatanparast, MD is a board-certified physician specializing in Hematology and Oncology at PIH Health. Dr. Vatanparast began her medical training early at King Drew Medical Magnet High School affiliated with UCLA Medical Center, where she had the opportunity to perform bench research in oncology. While there, her desire to care for people in their most vulnerable state using cutting-edge research/science and medical advancements drew her to hematology/oncology as a specialty. She has chaired a number of committees and published in major medical journals and has participated enrolled patients in more than 75 clinical trials.



**RONALD WOLF**  
**ONCOLOGY**

Surgical Oncologist  
MemorialCare Long Beach Medical Center

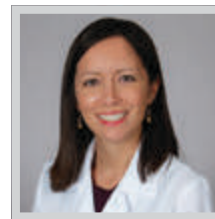
**D**r. Ronald Wolf is a board-certified surgical oncologist who specializes in treating liver, bile duct and pancreatic cancer at the MemorialCare Todd Cancer Institute at Long Beach Medical Center. He also serves as a professor for the Department of Surgery, Division of Hepatobiliary and Pancreas Surgery at UCI School of Medicine. His clinical interests include pancreatic adenocarcinoma, colon and rectal cancers that have metastasized to the liver, surgical treatment for bile duct tumors and cysts, as well as surgery for soft tissue sarcoma. He continues his work as a committee member of several national organizations involved in clinical trials.



**THOMAS LEE**  
**OPHTHALMOLOGY**

Director, The Vision Center at Children's Hospital  
Los Angeles  
Children's Hospital Los Angeles

**D**r. Thomas Lee's mission is to help eradicate childhood blindness worldwide. He earned his bachelor degree at Johns Hopkins University and received an MD from Cornell. He completed his ophthalmology residency at Cornell and then went to Harvard Medical School where he studied retinal stem cells and the role they play in cancer. Since arriving to Children's Hospital Los Angeles, he has focused on providing the highest level of care to children in Los Angeles and abroad leveraging technology to scale efforts. Among other significant impacts, Dr. Lee pioneered the use of endoscopic retinal surgery for pediatric retinal detachments and published the largest case series.



**GRACE RICHTER**  
**OPHTHALMOLOGY**

Associate Professor of Clinical Ophthalmology,  
USC Roski Eye Institute  
Keck Medicine of USC

**G**race Richter, MD, MPH is a glaucoma specialist in a tertiary care center seeking to provide the highest level of care for her patients. From medical management to minimally invasive glaucoma surgery to traditional surgery, Dr. Richter seeks excellence in the care she provides. Dr. Richter is doing research to better understand the vascular mechanisms that contribute to glaucoma pathophysiology and to determine ways to improve early detection of glaucoma. Areas of research include optical coherence tomography angiography for glaucoma; glaucoma epidemiology; diagnostic tools for glaucoma; and elucidating vascular mechanisms that contribute to glaucoma pathophysiology.



Join the  
**Community of Business™**

Your exclusive membership will give you access to comprehensive news and analysis of the local business community, through our weekly print issue and with online digital access – any time, any place

**SUBSCRIBE TODAY**

[labusinessjournal.com/subscribe](http://labusinessjournal.com/subscribe)

**LOS ANGELES BUSINESS JOURNAL**  
Reaching more than 250,000 Los Angeles Business Leaders



**THE HOSPITAL OF THE FUTURE IS IN SOUTH LA**



MLK Community Healthcare is proud to honor Infectious Disease Specialist Maita Kuvhenguwya, MD and all nominees of *Los Angeles Business Journal's* Top Doctors. Thank you for your leadership and expertise during this unprecedented time.

Visit us online at **MLKCH.ORG**

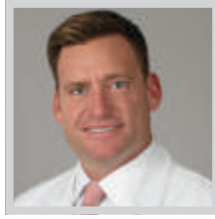
LOS ANGELES' TOP DOCTORS



**AMANDEEP BHALLA**  
**ORTHOPEDICS**

*Orthopaedic Spine Surgeon, Spine Center  
MemorialCare Long Beach Medical Center*

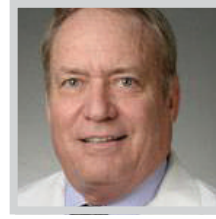
**A**mandeep Bhalla, MD is a board certified, spine fellowship trained orthopedic surgeon specializing in treatment of the neck, back and spinal column. Dr. Bhalla practices in Long Beach with the Memorial Orthopaedic Surgical Group. He is also on faculty at Harbor-UCLA Medical center and is a clinical instructor of Orthopaedic Surgery at the David Geffen School of Medicine at UCLA. He serves as the director of spine trauma for the department of Orthopaedic Surgery at Harbor-UCLA Medical Center. Dr. Bhalla also serves as a peer reviewer for the prestigious Journal of Bone and Joint Surgery and for The Spine Journal.



**SETH GAMRADT**  
**ORTHOPEDICS**

*Director of Orthopaedic Athletic Medicine; Associate Professor of Clinical Orthopaedic Surgery  
Keck Medicine of USC*

**A**s an academic orthopedic surgeon at Keck Medicine of USC, it is Dr. Seth Gamradt's goal to provide outstanding clinical care (both surgical and nonsurgical) to athletes of all levels and the community. He strives to provide high level care to USC Athletics while developing a comprehensive program to study and prevent the most common injuries sustained by athletes. He works to develop improved communication and optimal coordination between coaches, athletic trainers, strength and conditioning personnel, nutrition, and athletic medicine physicians to establish a comprehensive and harmonized program for the well-being of athletes.



**WILLIAM GOW**  
**ORTHOPEDICS**

*Orthopedic Surgeon  
Kaiser Permanente Los Angeles Medical Center*

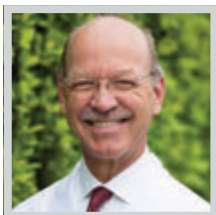
**D**r. William Gow is an orthopedic surgeon based in Hollywood and has been affiliated with Kaiser Permanente Los Angeles Medical Center since 1988. He received his medical degree from Loyola University Chicago Stritch School of Medicine and has been in practice for more than 20 years. Dr. Gow is originally a Midwesterner who grew up in the suburbs of Chicago. In 1977, he moved to Los Angeles and did his internship and residency at Harbor-UCLA Medical Center in Torrance. As the years went on, he subspecialized in knee surgery—for the past 20 years or so, most of the surgical procedures he has performed involve either arthroscopic surgery or knee replacement.



**ANDREW HSIAO**  
**ORTHOPEDICS**

*Chair, Orthopedic Department  
PIH Health*

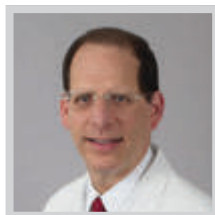
**A**ndrew Hsiao, MD is a board-certified orthopedic surgeon and fellowship trained in the subspecialty of sports medicine. He has a unique interest in soft tissue injuries and treatment of cartilage loss in the knee and shoulder performs procedures that help facilitate the repair and regeneration of cartilage. He focuses on arthroscopy and reconstructive procedures of the elbow, shoulder, and knee. Each problem is approached conservatively and a multidisciplinary approach is utilized to expedite recovery and return patients to an active lifestyle. Currently he serves as chair of the Orthopedic Department at PIH Health Whittier Hospital.



**RONALD KVITNE**  
**ORTHOPEDICS**

*Orthopedic Surgeon  
Kerlan-Jobe Institute, Cedars-Sinai*

**D**r. Ronald Kvitne is a board-certified orthopedic surgeon who specializes in sports medicine and the treatment of knees, shoulders, and elbows. One of the most highly recognized orthopedic surgeons in America, Dr. Kvitne completed his sports medicine-oriented Fellowship at the Kerlan-Jobe Orthopedic Clinic. Dr. Kvitne has served as team physician for the Los Angeles Kings for over 30 years; as team physician for the Los Angeles Galaxy for over 15 years; as orthopedic consultant for the UFC Mixed Martial Arts fighters from Las Vegas over 15 years; and as team physician for the Los Angeles Angels of Anaheim over the last three seasons.



**JAY R. LIEBERMAN**  
**ORTHOPEDICS**

*Professor and Chair, Department of Orthopaedic Surgery, Keck Medicine of USC  
Keck Medicine of USC*

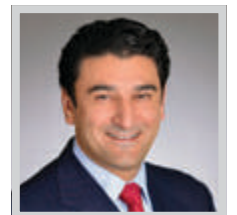
**D**r. Jay Lieberman is a pioneer in the field of regional gene therapy for bone repair. He is also leading an active clinical research program in outcomes after total joint arthroplasty. He has completed more than 300 published studies, book chapters and reviews and is the editor or co-editor of eight orthopedic texts, including Surgery of the Hip and American Academy of Orthopaedic Surgeons Comprehensive Orthopaedic Review. His other research areas include outcomes after total hip and knee replacement; venous thromboembolic disease after total joint replacement; and osteonecrosis of the hip.



**ANDREW LUU**  
**ORTHOPEDICS**

*Associate Director of Orthopedics and Total Joint Replacement Surgery  
PIH Health*

**A**ndrew Luu, MD is a board-certified surgeon specializing in orthopedic surgery. During his studies, Dr. Luu chose to specialize in orthopedic surgery because he was fascinated by the problem solving, planning, and intricacies that go into treating orthopedic injuries. He finds it gratifying that he is able to have such an immediate impact on his patients' quality of life. Dr. Luu specializes in complex joint reconstructions and also performs minimally invasive procedures including anterior total hip replacements and partial knee replacements. Dr. Luu currently serves as associate director of Orthopedics and Total Joint Replacement Surgery at PIH Health.



**A. NICK SHAMIE**  
**ORTHOPEDICS**

*Chief of Orthopaedic Spine Surgery,  
UCLA Spine Center  
UCLA Health*

**D**r. A. Nick Shamie serves as chief of orthopaedic spine surgery at the UCLA Spine Center and professor of orthopaedic surgery and spine surgery at the David Geffen School of Medicine at UCLA. He also serves as vice chair of International Affairs at UCLA Health. He is an expert reviewer for the Medical Board of California and is a member and former president of the American College of Spine Surgery. Dr. Shamie is actively involved in medical education of fellows, medical students and residents at UCLA and has traveled internationally (including China and the UAE) to teach spine procedures.





# Made for more lives touched



Avo Artinyan, MD  
General Surgery



Juan Barrio, MD  
Internal Medicine



Ernie Guzman, MD  
Pediatric Infectious  
Diseases



Faisal Khan, MD  
Pediatric General  
Surgery



Stephen Liu, MD  
Emergency  
Services



Elizabeth Maslow, MD  
Infectious Diseases



Saeid Safaee, MD  
Critical Care  
Medicine,  
Pulmonology



Laurence  
Spencer-Smith, MD  
Obstetrics and  
Gynecology

Doctors were made for more. More time spent learning the latest advances. More collaboration with other experts. More compassionate moments with those that are entrusted to their care. That's why Adventist Health is pleased to recognize these physicians for delivering outstanding healthcare. We thank you for your dedication to serving our communities by inspiring health, wholeness and hope.

## LOS ANGELES' TOP DOCTORS


**DAVID SKAGGS**  
**ORTHOPEDICS**

Chief of Orthopaedic Surgery  
 Children's Hospital Los Angeles

Dr. David Skaggs considers it an honor and privilege to have cared for the children of Los Angeles for the past 25 years. He has helped design and patent spine instrumentation which is used all over the world and has written and served as editor for the best-selling textbook in pediatric orthopedic surgery, *Fractures in Children*, in addition to two other text books that are used to train surgeons throughout the world. His background as a NCAA All-American in the 400 Meter hurdles helps him relate to young athletes in training and dealing with injuries.


**ANDREW WASSEF**  
**ORTHOPEDICS**

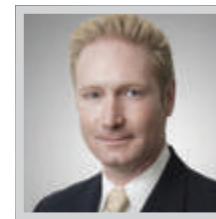
Medical Director, MemorialCare Joint Replacement Center  
 MemorialCare Long Beach Medical Center

Andrew J. Wassef, MD is a fellowship trained, board-certified orthopedic surgeon with Long Beach – Lakewood Orthopedic Institute in Long Beach. He serves as the medical director of the MemorialCare Joint Replacement Center at Long Beach Medical Center. He specializes in joint replacement and the treatment of arthritic conditions affecting the hip, knee and shoulder. His clinical interests include complex reconstructions, hip resurfacing, joint replacements in the younger population, minimally invasive surgery, revision of failed total joint replacements, revision surgery and robotic-assisted surgery. Dr. Wassef instills the rapid recovery philosophy pioneered by the MemorialCare Joint Replacement Center.


**MARLON MADUCDOC**  
**OTOLARYNGOLOGY**

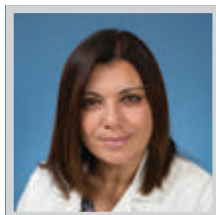
Otolaryngologist  
 PIH Health

Marlon Maducdoc, MD is a board-certified otolaryngology head and neck surgeon, a specialty focusing on ears, nose and throat (ENT). Dr. Maducdoc earned a medical doctorate from the University of California Irvine School of Medicine and completed a residency at the University of California Medical Center. He has published numerous articles in peer-reviewed journals. During his year serving as chief resident at University of California in Irvine, he was the recipient of the excellence in medicine award recognizing his achievements and outstanding contributions to medical education. Dr. Maducdoc has experience in treating complex ENT disorders in both pediatric and adult populations.


**DAVID REINSTADLER**  
**OTOLARYNGOLOGY**

Otolaryngologist  
 PIH Health

David R. Reinstadler is a board-certified otolaryngologist at PIH Health. He specializes in head and neck conditions, focusing on the ear, nose and throat (ENT). Dr. Reinstadler chose the otolaryngology specialty because he found the anatomy of the head and neck to be fascinating. He is intrigued by the combination of aesthetics and technicality in his specialty. He is board certified in facial plastic surgery and works with patients requiring facial reconstruction. Since each case is different, especially in the operating room, Dr. Reinstadler is always willing to adapt and change possible preconceived notions about a case.


**MAIE ST. JOHN**  
**OTOLARYNGOLOGY**

Chair of Head and Neck Surgery  
 UCLA Health

A highly renowned surgeon, scientist and educator, Dr. Maie St. John is professor and chair of the department of head and neck surgery at the David Geffen School of Medicine at UCLA. She holds the endowed Thomas C. Calcaterra, MD, Chair in Head and Neck Surgery and is co-director of the head and neck cancer program at the UCLA Jonsson Comprehensive Cancer Center. She is also a professor of bioengineering at the UCLA Henry Samueli School of Engineering. Dr. St. John specializes in meticulously defining tumor margins at the microscopic level during the surgical removal and treatment of head and neck cancers in the operating room.


**BOZENA WROBEL**  
**OTOLARYNGOLOGY**

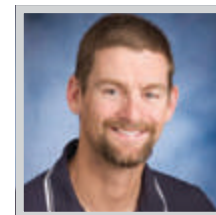
Associate Professor of Otolaryngology;  
 Neurosurgery Chief, Division of Rhinology and Endoscopic Skull Base Surgery, Dept of Otolaryngology  
 Keck Medicine of USC

Through her entire career, Bozena Wrobel has been dedicated to providing the highest possible level of care for her patients and delivering the highest possible level of education to residents and trainees. She joined Keck straight from fellowship and remained as faculty till present. She has embraced a leadership role in moving Keck rhinology to a new level. This required bringing to Keck the newest technology and establishing programs which have never existed before, such as the first allergy program at the department, first modern sinus surgery program, and first endoscopic skull base surgery program.


**ALBERT ANTONIO**  
**PEDIATRICS**

Director, Neonatal Transport Medicine Program  
 MemorialCare Miller Children's & Women's Hospital Long Beach

Dr. Albert Antonio, DO, FAAP, is a board-certified pediatrician and neonatologist, and serves as the director of the Neonatal Transport Medicine Program at Miller Children's & Women's. Dr. Antonio oversees the Neonatal Transport Medicine Program operations, program development, staff and physician training specific to critically ill neonates transport. His commitment to improving clinical and patient outcomes centers on TeamSTEPPS, designed to optimize the use of information, clinicians, and resources to achieve optimal outcomes. It was developed by the Department of Defense's Patient Safety Program in collaboration with the Agency for Healthcare Research & Quality and Dr. Antonio is a certified master trainer.


**CHRISTOPHER BABBITT**  
**PEDIATRICS**

Medical Director, Cheresse Mari Laulhere Pediatric Intensive Care Unit  
 MemorialCare Miller Children's & Women's Hospital Long Beach

Christopher Babbitt, MD, is the medical director of the Cheresse Mari Laulhere Pediatric Intensive Care Unit (PICU) at MemorialCare Miller Children's & Women's Hospital Long Beach. He received his medical degree at Tulane Medical School before going on to complete his residency and fellowship at UCLA Mattel Children's Hospital. Dr. Babbitt is certified by the American Board of Pediatrics with a subspecialty in pediatric critical care. He has served in several different appointments at Miller Children's throughout his career, including clinical director of the PICU and medical director of physician informatics.



# Congratulations to our Top Doctors



**Gurjeet Kalkat, MD**  
Chief Medical Officer  
Pulmonology & Critical Care



**Kevin V. Hua, DO**  
Emergency Medicine

This year's recognition has proven that even during extraordinary times, you rise to the challenge to care for our communities.

It's your commitment to our mission, which manifests itself by putting every patient first.



Find a doctor at  
[emanatehealth.org](https://emanatehealth.org)

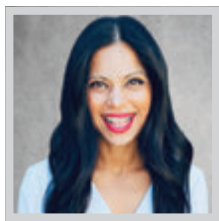


Inter-Community Hospital  
Covina

Queen of the Valley Hospital  
West Covina

Foothill Presbyterian Hospital  
Glendora

LOS ANGELES' TOP DOCTORS



**KAVITHA BHATIA**  
PEDIATRICS

Chief Medical Officer, Strategy:  
Chair, Prime Healthcare Foundation  
Prime Healthcare

Dr. Kavitha Bhatia, as Prime Healthcare's chief medical officer, strategy, leads the development and implementation of strategic initiatives that advance the mission and success of Prime Healthcare. Dr. Bhatia works with corporate and hospital leaders to align goals, prioritize system-wide value creation, and implement strategic initiatives to ensure Prime's continued operational, financial and clinical success. Dr. Bhatia's leadership and vision have helped Prime build the infrastructure to leverage its unique value and national scale, leading to improved quality, efficiency, and standardization at Prime's 46 hospitals across the United States.



**MICHAEL BRYANT**  
PEDIATRICS

Vice Chair of Diversity Equity, Inclusion (Department of Pediatrics); Division Head, Hospital Medicine  
Children's Hospital Los Angeles

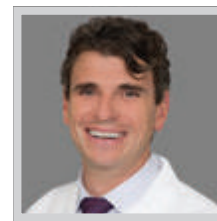
Dr. Michael Bryant is a professor of clinical pediatrics at the USC Keck School of Medicine and is currently the division chief of pediatric hospital medicine at Children's Hospital of Los Angeles (CHLA). In September of 2020 he was selected as the inaugural vice chair of diversity equity and inclusion for the Department of Pediatrics at CHLA, a department with over 450 faculty. Dr. Bryant was a National Health Services Scholar and spent his early career as a pediatrician serving the migrant farm population in Ventura County and focused on improving access for the historically underserved patients and those economically disadvantaged.



**TORIN CUNNINGHAM**  
PEDIATRICS

Medical Director, Orthopedic Center  
MemorialCare Miller Children's & Women's  
Hospital Long Beach

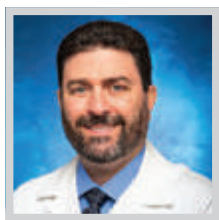
Dr. Torin J. Cunningham is a board-certified orthopedic surgeon and medical director of the Orthopedic Center at MemorialCare Miller Children's & Women's Hospital Long Beach. Dr. Cunningham specializes in spinal deformity/scoliosis surgery for children and adolescents, hip reconstructive surgery and general pediatric orthopedic care. In addition, Dr. Cunningham teaches residents from the pediatric residency program and has given several lectures at Miller Children's & Women's. He is one of only a handful of pediatric orthopedic surgeons in the country that is trained on the ExcelsiusGPS, a robotic navigation technology, for spine surgery. ExcelsiusGPS is designed to improve accuracy and optimize patient care by using robotics and navigation.



**SAAR DANON**  
PEDIATRICS

Medical Director, Pediatric Cardiology and Congenital Cardiac Catheterization  
MemorialCare Miller Children's & Women's  
Hospital Long Beach

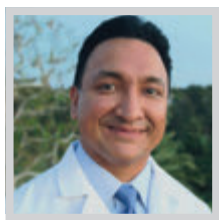
Dr. Saar Danon, MD is the medical director of the Pediatric Cardiology and Congenital Cardiac Catheterization at MemorialCare Miller Children's & Women's Hospital Long Beach. As an interventional pediatric cardiologist, he specializes in the use of catheters and devices to treat children with congenital heart disease. Dr. Danon performs catheter-based interventions, such as ASD, VSD, and PDA device closure, balloon valvuloplasty, angioplasty, stent placement, as well as trans-catheter valve replacement. He is also active in the diagnosis and treatment of infants, children and young adults with all forms of heart disease.



**GLENN LEVINE**  
PEDIATRICS

Pediatric Critical Care  
MemorialCare Miller Children's & Women's  
Hospital Long Beach

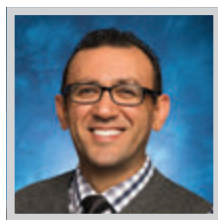
Glenn Levine, MD is a pediatric critical care physician at MemorialCare Miller Children's & Women's Hospital Long Beach since 2004. Dr. Levine completed his BS in physiological sciences at UCLA followed by his Medical Degree at University of Texas Southwestern Medical School in Dallas. He did his pediatric internship at Texas Tech University Health Science Center in Lubbock and his residency at Children's Hospital of Los Angeles. He is triple boarded in pediatrics, pediatric critical care and hospice and palliative medicine.



**INDERPAL RANDHAWA**  
PEDIATRICS

Medical Director, Children's Pulmonary Institute, Miller Children's & Women's Hospital Long Beach  
MemorialCare Miller Children's & Women's  
Hospital Long Beach

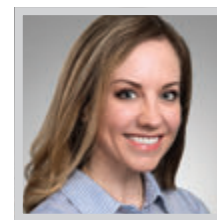
Dr. Inderpal Randhawa is a leading specialist in internal medicine, pediatrics, immunology, allergy medicine, and pulmonology with 15 years of experience. Dr. Randhawa focuses on the research and treatment of 'orphan' diseases—areas of medicine that have stalled in development and progress. Dr. Randhawa is the medical director of the Children's Pulmonary Institute at Miller Children's & Women's where he has served in various leadership positions for more than a decade. Dr. Randhawa also is the program director of the Pediatric Pulmonology Fellowship at UCI and Miller Children's & Women's, and program director of the Cystic Fibrosis Center.



**ANTOINE SOLIMAN**  
PEDIATRICS

Medical Director, Neonatal Intensive Care Unit  
MemorialCare Miller Children's & Women's  
Hospital Long Beach

Antoine Soliman, MD serves as the medical director of Miller Children's & Women's NICU, a part of the Pediatric Medical Group practice at MemorialCare. Dr. Soliman was formerly the Director of the Small Baby Unit at Children's Hospital Orange County and Assistant Clinical Professor of Pediatrics at the University of California, Irvine School of Medicine. In 2007, Dr. Soliman was recruited to join the faculty at Children's Hospital Orange County and the University of California, Irvine Department of Pediatrics. In his time there, he helped develop the Small Baby Unit - a unique program of care that remarkably improved outcomes for extremely preterm infants.



**MILICENT ROVELO**  
PLASTIC/RECONSTRUCTION

Surgeon  
PIH Health

Millicent Rovelo, MD is a double board-certified surgeon specializing in plastic, reconstructive and cosmetic surgery at PIH Health. Dr. Rovelo has her own private practice in Beverly Hills and is also part of the medical staff at PIH Health. Her main focus is post-bariatric body contouring. Post-bariatric patients have typically lost large amounts of weight in a very short time. They are left with a significant amount of excess skin that contributes to additional health and hygiene problems. In the body contouring surgeries that Dr. Rovelo performs, she removes and contours large amounts of excess skin of the abdomen, chest, breasts, thighs, arms, and face.



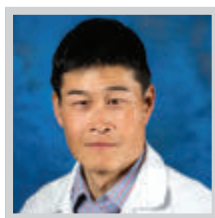
LOS ANGELES' TOP DOCTORS



**MARK URATA**  
**PLASTIC/RECONSTRUCTION**

Chief of the Division of Plastic and Maxillofacial Surgery  
Children's Hospital Los Angeles

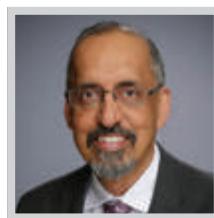
Dr. Mark M. Urata is board certified in both oral and maxillofacial surgery and plastic and reconstructive surgery, making him uniquely qualified to lead the Division of Plastic and Maxillofacial Surgery at Children's Hospital Los Angeles. Certified by both the American Board of Plastic Surgery and the American Board of Oral and Maxillofacial Surgery, he specializes in the most complex craniofacial anomalies, including craniosynostosis, syndromic reconstruction, and jaw deformities. He is an associate professor of plastic surgery at Keck School of Medicine of USC and a research assistant professor in the Center for Craniofacial Molecular Biology of the USC School of Dentistry.



**STEVEN CHANG**  
**PULMONOLOGY**

Clinical Professor of Medicine in Pulmonary & Critical Care, David Geffen School of Medicine at UCLA; Director, Medical Intensive Care Unit, Ronald Reagan-UCLA Medical Center  
UCLA Health

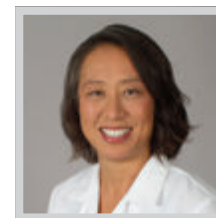
Dr. Steven Chang has expertise in the management of acute respiratory failure requiring mechanical ventilatory support, and in the management of shock. He is currently involved as a co-primary investigator in ARDS trials overseen by the PETAL network and sponsored by the NIH/NHLBI. He has been involved in multiple clinical trials investigating mechanical ventilation, septic shock, and ICU structure & function. He also has more recently been involved in leading research relating to lung health and COVID-19. In 2015, Dr. Chang received the Center for Translational Technologies Core Voucher Award for his research on Biomarkers for hepsis versus sepsis in critically ill patients with liver failure.



**GURJEET KALKAT**  
**PULMONOLOGY**

Chief Medical Officer  
Emanate Health

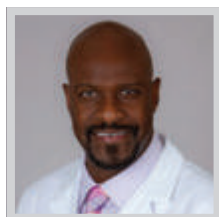
Dr. Gurjeet Kalkat is the chief medical Officer for Emanate Health. Before he took on this role he was the medical director of Foothill Presbyterian Hospital. He also served as the chief of staff at Foothill Presbyterian Hospital in 1997. Dr. Kalkat has been with Emanate Health since 1992. As a leader at Emanate Health, he is the voice that staff, physicians and the community lean on to provide critical health news and information. Dr. Kalkat has more than 37 years of experience in the medical field. He provides integrated, quality and efficient medical care to the patients in San Gabriel Valley.



**MAY M. LEE**  
**PULMONOLOGY**

Associate Professor of Medicine; Program Director, PCCSM; Director of ICU at LAC+USC Medical Center  
Keck Medicine of USC

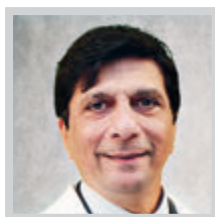
Dr. May Lee's clinical interests are in critical care medicine as well as medical education. She is currently the medical director of the Medical Intensive Care Unit (MICU) at the LAC+USC Medical Center. Dr. Lee has long been active as an educator both in and out of medicine and has innovated and created new educational programs and teaching modalities for her all her trainees. She is currently the program director for the Pulmonary and Critical Care fellowship program at USC. She also serves as the vice chair of the Training Committee of the American Thoracic Society.



**PETER S. MARSHALL**  
**PULMONOLOGY**

Clinical Associate Professor of Medicine, Division of Pulmonary, Critical Care and Sleep Medicine; Clinical Vice Chief for Medical Critical Care Medicine  
Keck Medicine of USC

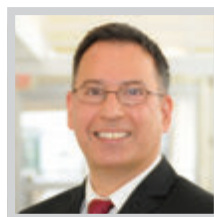
Prior to arriving at Keck Medicine of USC, Peter Marshall, MD, MPH made significant impact in the field of Tele-ICU. His work not only improved the care of ICU patient across four hospitals in two states but also helped provide a measure of cohesion to the vast Yale-New Haven Health System. Since coming to Keck, Dr. Marshall has had major impact on the management of COVID-19 and coordinating efforts at Keck, which has served as a major referral center for hospitals that are overwhelmed or unable to care for patients with severe COVID-19 illness.



**PARYUS PATEL**  
**PULMONOLOGY**

Corporate Chief Medical Officer  
Prime Healthcare

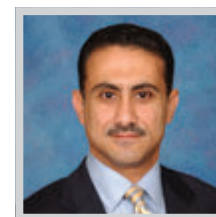
Currently serving as Corporate Chief Medical Officer for Prime Healthcare, Dr. Paryus Patel has leveraged his 30 years of professional medical experience to help build Prime Healthcare into one of the largest and most successful hospital systems in the nation. His work in health services research informs his scientific approach to optimizing patient outcomes and resource utilization, with an emphasis on data-driven analyses and process improvement supplemented by the latest in information technology. Dr. Patel also serves as chief medical officer of Centinela Hospital Medical Center, one of Prime Healthcare's premier, award-winning hospitals in Los Angeles County.



**SAEID SAFAEE**  
**PULMONOLOGY**

Chief of Staff and Chair,  
Pulmonary and concileCritical Care Department  
Adventist Health Glendale

Dr. Saeid Safaee is a pulmonary/critical care specialist serving the Glendale and La Canada area. He completed his fellowship in pulmonary and critical care at Penn State University and did his internship and residency at PinnacleHealth at Harrisburg Hospital. Dr. Safaee is currently serving as a chief of staff and chair of pulmonary/critical care department as well as an active member of the COVID-19 Advisory Team at Adventist Health Glendale.



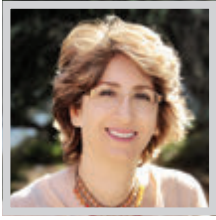
**SHERIEF GAMIE**  
**RADIOLOGY**

Director of Nuclear Medicine,  
MemorialCare Imaging Center  
MemorialCare Long Beach Medical Center

Sherief H. Gamie, MD, PhD is a board-certified clinical nuclear medicine specialist. His clinical interests include targeted applications of radiopharmaceuticals in cancer diagnosis and therapy. Dr. Gamie's research focuses on molecular imaging in cancer staging and targeted radiation therapy (brachytherapy & intravascular radiation therapy (IVRT)) and his work has been published in multiple peer-reviewed publications. Dr. Gamie is dedicated to the belief, that cancer is a heterogeneous group of diseases that necessitate a multidisciplinary approach to treatment. He has built his practice, towards the goal of an uncompromising pursuit for excellent patient outcomes around this concept.

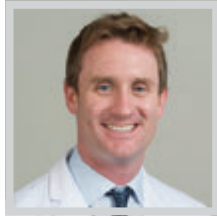


## LOS ANGELES' TOP DOCTORS


**FARIBA GOODARZIAN**  
**RADIOLOGY**

Vice Chair of the Department of Radiology  
 Children's Hospital Los Angeles

Dr. Fariba Goodarzian has 19 years of experience in pediatric radiology and neuroradiology. She is engaged in several collaborative research projects involving pediatric oncology, radiation oncology, pediatric gastroenterology and pediatric surgery. Dr. Goodarzian is working closely with sarcoma researchers and clinicians at CHLA and USC collaborators. She is also interested in applying advanced MRI techniques in pediatric soft tissue sarcoma. She has experience in performing and interpreting US studies. Her secondary research interest is in applying more advanced US techniques in the evaluation of MSK cases. She is actively involved in performing focused treatment for neuroblastoma patients.


**JOHN MORIARTY**  
**RADIOLOGY**

Director of Interventional Innovation and Co-Director of the Vascular Ultrasound Service at Ronald Reagan UCLA Medical Center  
 UCLA Health

Dr. John Moriarty is director of UCLA Health's program for interventional innovation and co-director of the vascular ultrasound service at Ronald Reagan UCLA Medical Center. He is an associate professor of radiology and of medicine at the David Geffen School of Medicine at UCLA. Dr. Moriarty's specialties include painstaking, image-guided procedures to address venous disease and large clots blocking blood flow to the lungs and heart. Examples include deep vein thrombosis, pulmonary embolism, right heart clots and arteriovenous malformations, or abnormal connection between arteries and veins. With his reassuring manner and lilting Irish accent, Dr. Moriarty exudes calm and confidence to people often facing frightening medical scenarios.


**ROBERT SUH**  
**RADIOLOGY**

Director of thoracic interventional services at Ronald Reagan UCLA Medical Center and a clinical professor of radiological sciences at the David Geffen School of Medicine at UCLA  
 UCLA Health

Dr. Robert Suh is the director of thoracic interventional services at Ronald Reagan UCLA Medical Center and a clinical professor of radiological sciences at the David Geffen School of Medicine at UCLA. Appointed as the first vice chair of radiology education in 2016, he served as acting chief of thoracic imaging from 2006-2007. Reflecting his interest in shaping future clinicians, he has directed the diagnostic radiology residency program since 2002. Prior to joining UCLA, Dr. Suh was the director of thoracic imaging and intervention at Loma Linda University Medical Center.


**BENITA TAMRAZI**  
**RADIOLOGY**

Director of Neuroradiology  
 Children's Hospital Los Angeles

Dr. Benita Tamrazi joined Children's Hospital Los Angeles (CHLA) in 2014 where she leads an active clinical practice with a special interest in brain tumor imaging as well as imaging of post treatment effects in brain tumor patients. Since joining CHLA, she has published over 40 peer reviewed manuscripts, as well as authored eight book chapters. As the neuroradiologist in charge of imaging protocols and interpretation for the Pediatric Brain Tumor Consortium Clinical Trials at CHLA, Dr. Tamrazi is in the unique position of providing critical information to the neuro-oncologists and neurosurgeons regarding the preoperative assessment of brain tumors.



## New Clinical Trial will Test Combination Monoclonal Antibody Therapy for COVID-19

A Phase 2/3 clinical trial has begun to evaluate a combination investigational monoclonal antibody therapy for its safety and efficacy in people who have mild or moderate COVID-19. The two experimental antibodies, BII-196 and BII-198, target SARS-CoV-2, the virus that causes COVID-19. The trial, known as ACTIV-2, is sponsored by the National Institute of Allergy and Infectious Diseases (NIAID), part of the National Institutes of Health.

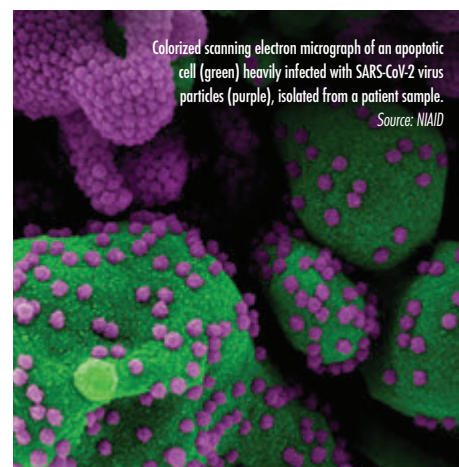
NIH's Accelerating COVID-19 Therapeutic Interventions and Vaccines (ACTIV) program is a public-private partnership to develop a coordinated research strategy for speeding development of the most promising treatments and vaccine candidates. ACTIV-2 is a master protocol designed for evaluating multiple investigational agents compared to placebo in adults with mild-to-moderate COVID-19. The trial, led by the NIAID-funded AIDS Clinical Trials Group (ACTG) and supported by PPD (Wilmington, North Carolina), will enroll participants at sites around the world.

The ACTIV-2 study began on Aug. 4, 2020, with an evaluation of LY-CoV555, an investigational monoclonal antibody discovered by AbCellera Biologics in collaboration with NIAID's Vaccine Research Center. LY-CoV555 was developed further and manufactured by Eli Lilly and Company, in partnership with AbCellera. On Nov. 10, 2020, LY-CoV555, also known as bamlanivimab,

was granted Emergency Use Authorization by the U.S. Food and Drug Administration for treating mild-to-moderate COVID-19 in adults and children over 12 years old who are at high risk for progressing to severe COVID-19 and/or hospitalization. With the initiation of the BII-196 and BII-198 experimental monoclonal antibodies in the ACTIV-2 study, the LY-COV555 sub-study will close to enrollment.

BII-196 and BII-198 are investigational, neutralizing monoclonal antibodies manufactured by Bii Biosciences. Antibodies are infection-fighting proteins naturally made by the immune system that can bind to viruses and prevent them from infecting cells. BII-196 and BII-198 are synthetic versions of antibodies produced naturally by humans. Data on each antibody from Phase I trials that are currently ongoing support the doses being used in the ACTIV-2 trial.

The ACTIV-2 study design allows researchers to observe the therapeutics' efficacy in a small group of volunteers and then administer it to a larger group if the antibody appears safe and effective. The trial will initially enroll 220 participants with mild or moderate COVID-19, who are at risk for disease progression. Half of the participants (110) will receive BII-196 and BII-198 through intravenous infusions, while the remaining half will receive placebo infusions. Participants are assigned at random to one of the treatment groups, and the trial is blinded so neither participants nor investiga-



tors will know who is receiving the antibody therapy. Participants will attend a series of clinic or at-home visits by clinicians to track their condition and will be followed for a total of 72 weeks.

An independent Data and Safety Monitoring Board (DSMB) overseeing the trial will review the data collected at 28 days. They will monitor data to see if the therapy is safe, can reduce the duration of COVID-19 symptoms and can eliminate the presence of viral RNA in the body. If there are no serious safety concerns and the results seem promising, the trial will transition to Phase 3 to enroll approximately 622 additional outpatient volunteers,

for a total of 842 trial participants. These new participants will be randomized to receive the therapeutic or a placebo.

The primary objective of the Phase 3 trial is to determine if the therapy prevents either hospitalization or death by 28 days after study entry.

The study team for ACTIV-2 is led by protocol chairs Kara W. Chew, M.D., M.S., of UCLA, and Davey Smith, M.D., MAS, of the UCSD. Eric S. Daar, M.D., of UCLA, and David Wohl, M.D., of the University of North Carolina at Chapel Hill, serve as protocol vice-chairs. The ACTG network is led by chair Judith Currier, M.D. (UCLA) and vice-chair Joseph Eron, M.D., of UNC. The study of BII-196 and BII-198 is led by Eric S. Daar, M.D., of the Harbor-UCLA Medical Center and Teresa H. Evering, M.D., M.S., of Weill Cornell Medical Center, New York City.

For more information on this study, please visit [riseabovcovid.org](https://riseabovcovid.org), or [clinicaltrials.gov](https://clinicaltrials.gov) and search identifier NCT04518410.

NIH, the nation's medical research agency, includes 27 Institutes and Centers and is a component of the U.S. Department of Health and Human Services. NIH is the primary federal agency conducting and supporting basic, clinical, and translational medical research, and is investigating the causes, treatments, and cures for both common and rare diseases. For more information about NIH and its programs, visit [nih.gov](https://nih.gov).